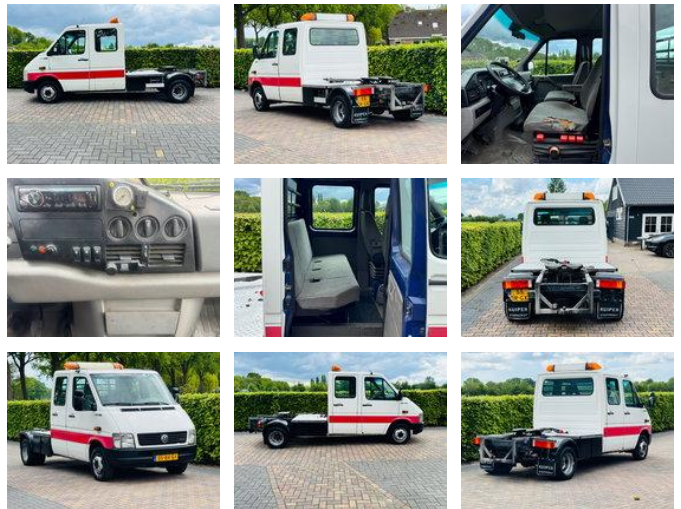


# Volkswagen LT 2.8 TDI lang DUBBEL CABINE

## General features

Brand	Volkswagen
Model	LT
Subcategory	Light duty tractor unit
Licence plate	55-BR-GX
Odometer reading	425.417km
Construction year	2004
Date of first registration	15-10-2004
Condition	Used
Fuel	Diesel
Emission class	Euro 3
Reference	55-BR-GX



## Characteristics

Empty weight	2.245kg
Load capacity	1.255kg
GVW	3.500kg
Door count	2

# Volkswagen LT 2.8 TDI lang DUBBEL CABINE

## Technical specifications

Number of axes	2
Axis configuration	4x2
Transmission	Manual
Engine output	158hp

## Description

= Additional options and accessories = - Controlled slip differential - Driver's airbag - Electrically operated front windows - Front headrests - Heat reflecting glass - Rear head rests - Remote central locking - Tinted glass = Dealer information = [WWW.HVANDEBUNTE.COM](http://WWW.HVANDEBUNTE.COM) PRIJS EXCLUSIEF B.T.W (NETTO PRIJS)

## Accessories

- Immobilizer
- Power steering
- Towbar
- Anti-lock braking system
- Central locking
- Electrically operated windows
- Radio/cassette player
- Radio/CD player
- Spare wheel